



Majete Wildlife Reserve

MALAWI

715 KM² | AFRICAN PARKS PROJECT SINCE 2003

This highly diverse 715 km² reserve features undulating hills, low-lying grassy plains, and mixed woodland punctuated by the ghost-like Star Chestnut trees and large mahoganies. To the reserve's east, the Shire river cuts through the landscape and ultimately crashes over the Kapuchira Falls. Majete Hill, the reserve's highest point, provides a breath-taking vantage point from which to see the whole reserve.

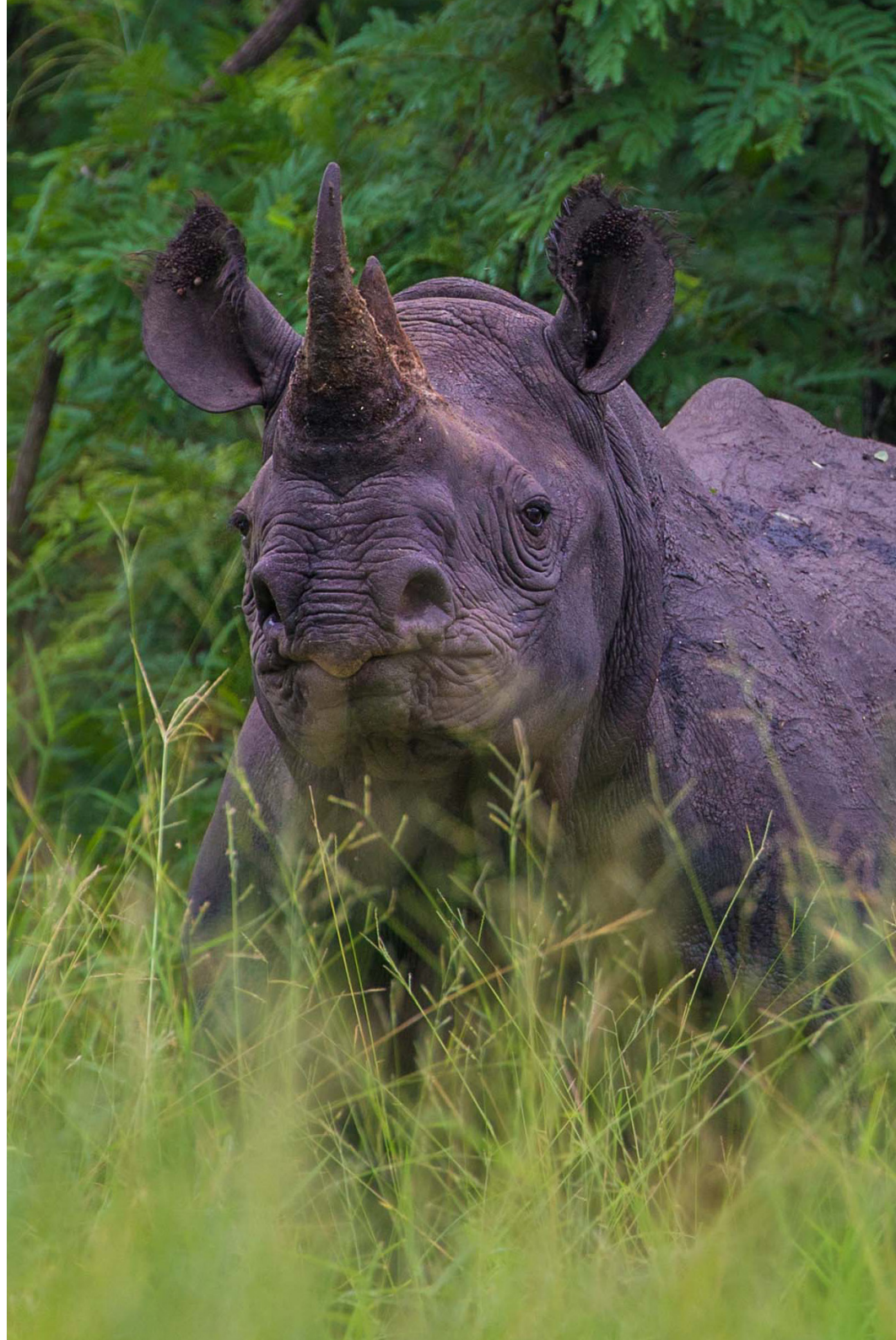
Visitors to the reserve can expect strong elephant sightings, punctuated with the chance at predator sightings and always a steady stream of general wildlife. Safari by boat is a highlight to complement the game drives.

With excellent vegetation, ungulates such as kudu, sable antelope and zebra thrive and provide a healthy prey base for a full guild of predators. As a wildlife stronghold in Malawi, Majete also boasts some specials: nyala, shy klipspringer and recently reintroduced giraffe. Birders are also well catered for in Majete, which is home to four species of vulture and local specials such as Livingstone's flycatcher, Boehm's bee-eater and racket-tailed roller, which are all regularly sighted.

 NOVEMBER TO APRIL  MAY TO OCTOBER



Majete Wildlife Reserve is managed by African Parks in partnership with the Malawian Department of National Parks and Wildlife



Located in southern Malawi's low-lying Shire river valley and surrounded by rocky highlands.



ACCESS

A 90 minute drive (70km) from the city of Blantyre; and 5.5 hours drive (380km) from the capital of Lilongwe. Also accessible by private charter. 4x4 vehicle recommended in wet season.

RESERVATIONS

majete@africanparks.org
+265 999 521 741



Game Capture Campsite

Located within the reserve proper, the Game Capture community campsite is set under a grove of trees, for shade and cool temperatures. Accommodating up to 25 guests in designated tent sites as well as up to 8 guests in the shelters, this is an excellent base from which to explore the reserve with activities on offer such as game drives and boat trips (additional cost). The site is unfenced allowing wildlife to move freely through camp.

**FROM \$10
PER PERSON
PER NIGHT**



CAMP SIZE

Max 25 guests
in ground tents;
rooftop tents on vehicles
not included in total

Max 8 people
in shelters
(2 people per shelter)



ACTIVITIES

Game drives
Boat trips on the Shire river
Bird walks

INCLUSIONS

Per shelter: linens,
shared ablution & lapa,
private braai area.
Per tent site: includes
shared ablution & lapa,
5 designated braai areas



Game Capture Campsite is located inside the reserve, 10 minutes from the main gate.



ACCESS

A 90 minute drive (70km) from the city of Blantyre; and 5.5 hours drive (380km) from the capital of Lilongwe. Also accessible by private charter. 4x4 vehicle recommended in wet season.

RESERVATIONS

majete@africanparks.org
+265 999 521 741





Game Capture Campsite



RESERVE HOURS
6:00am to 6:00pm



TENT DETAILS

Sites for up to 25 guests
Shared ablution
5 designated braai areas

SHELTER DETAILS

3 raised shelters;
one ground level shelter
2x double/2x twin
configuration with linens
Shared ablution
Private braai area per shelter



HEALTH & SAFETY

Malaria prophylactics
recommended.
All other vaccines, please
consult your physician.
Medical evacuation
insurance required.



SERVICES

Linen & kitchen boxes
available for hire
Tents for hire
Borehole water
(non-potable)
Braai areas maintained
Shop (basic provisions)



CHILD POLICY

Children 12 & older may participate
in boat or bird walk activity.
The sites are located in
a predator dense reserve
and children must be
supervised at all times.



MONEY

Visa & Mastercard accepted
Currency accepted: Malawian
kwacha, US dollar, euros, South
African rand and GB pound.



SEASONS

Majete has a tropical
to sub-tropical climate,
so temperatures remain
high for much of the year.



THE GREEN SEASON NOVEMBER TO APRIL

Average Rainfall:
122mm/month
Average Temperature:
30°C
High Humidity



THE DRY SEASON MAY TO OCTOBER

Average Rainfall:
12mm/month
Average Temperature:
25°C
Low Humidity

RESERVATIONS

majete@africanparks.org
+265 999 521 741

